

CALAMBA WATER DISTRICT
ENGINEERING DEPARTMENT
PLANNING AND DESIGN DIVISION

PROJECT TITLE:

EXPANSION OF WATER LINES

LOCATION:

Masikap St.Brgy. Real, Calamba City, Laguna

AUTOCAD BY: ENGR. V. C. DAVID

DESIGNED BY: ENGR. V. C. DAVID

CHECKED BY: ENGR. R. A. CAPITILE

RECOMMENDED BY: ENGR. J. A. GILLERA

APPROVED BY: MR. E. A. AGUILAR

SHEET CONTENTS:

LOCATION MAP

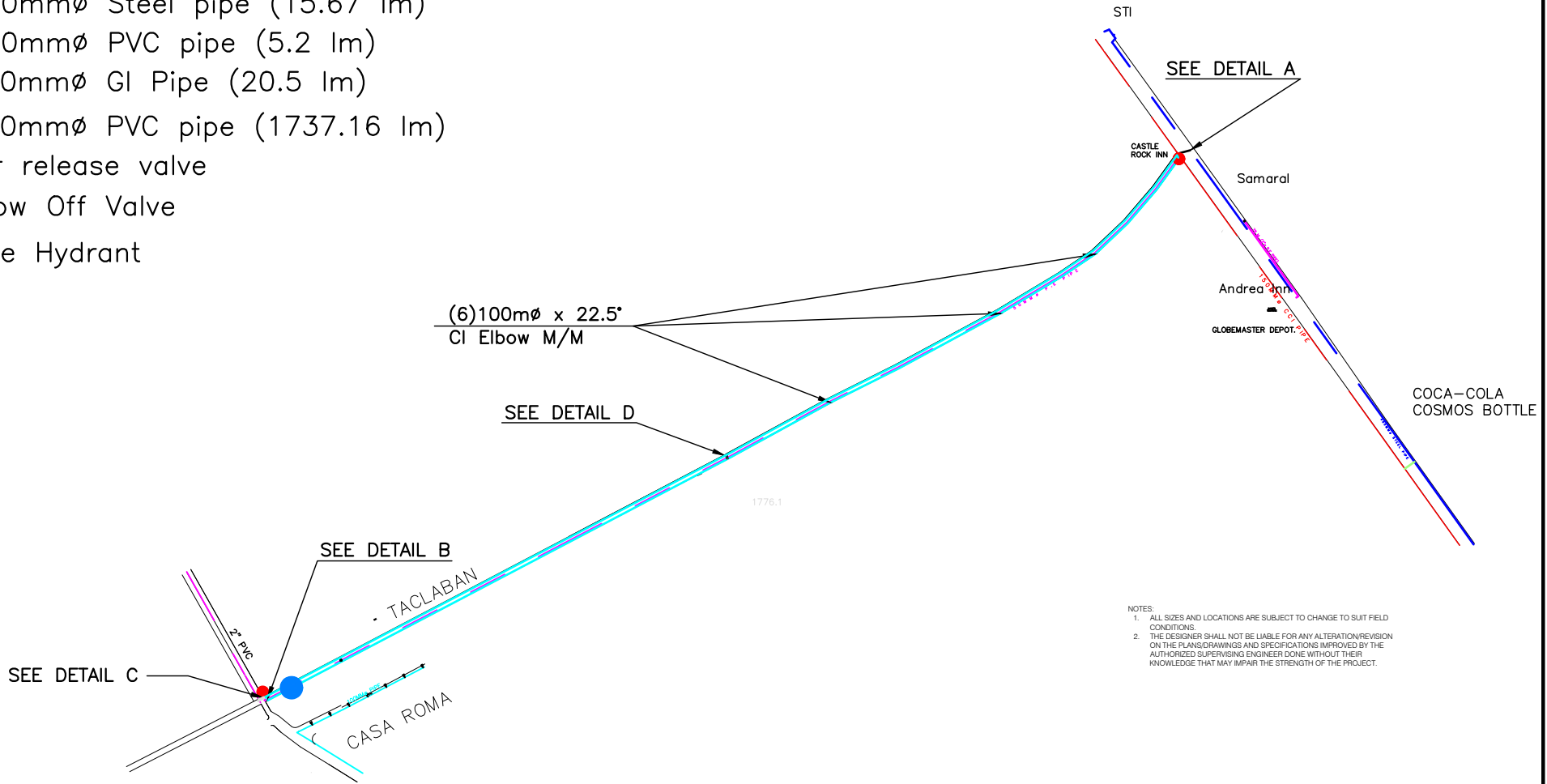
DATE:

SHEET NO.

W1

LEGEND:

- Existing pipe
- 150mmØ Steel pipe (15.67 lm)
- 150mmØ PVC pipe (5.2 lm)
- 100mmØ GI Pipe (20.5 lm)
- 100mmØ PVC pipe (1737.16 lm)
- Air release valve
- Blow Off Valve
- Fire Hydrant



NOTES:
 1. ALL SIZES AND LOCATIONS ARE SUBJECT TO CHANGE TO SUIT FIELD CONDITIONS.
 2. THE DESIGNER SHALL NOT BE LIABLE FOR ANY ALTERATION/REVISION ON THE PLANS/DRAWINGS AND SPECIFICATIONS IMPROVED BY THE AUTHORIZED SUPERVISING ENGINEER DONE WITHOUT THEIR KNOWLEDGE THAT MAY IMPAIR THE STRENGTH OF THE PROJECT.

CALAMBA WATER DISTRICT
 ENGINEERING DEPARTMENT
 PLANNING AND DESIGN DIVISION

24/7 Public Service

LAKEVIEW SUBD., HALANG, CALAMBA CITY

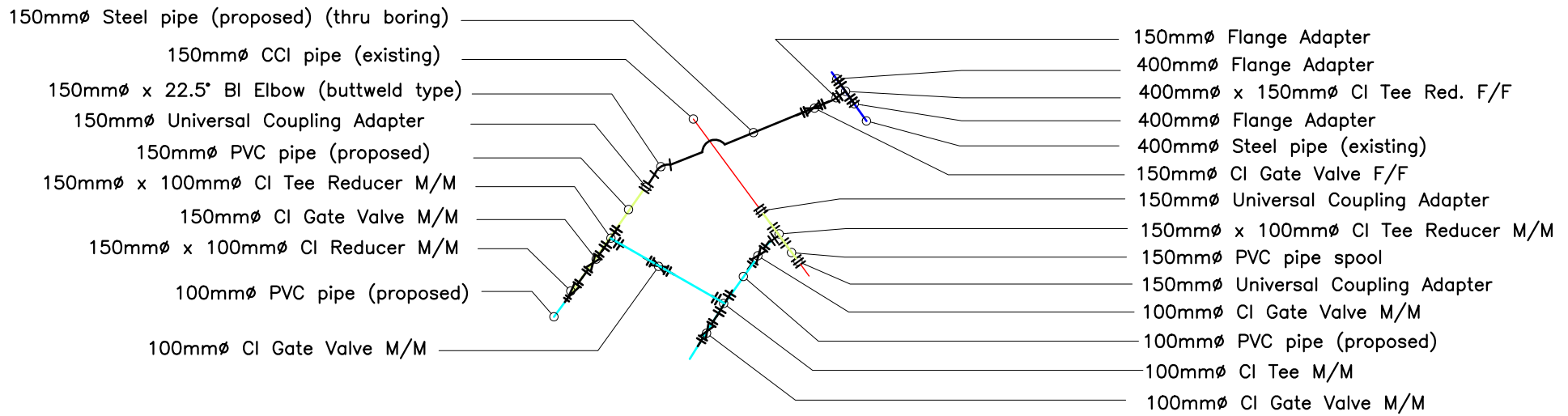
PROJECT TITLE:	EXPANSION OF WATER LINES
LOCATION:	Masikap St.Brgy. Real, Calamba City, Laguna

AUTOCAD BY: ENGR. V. C. DAVID
DESIGNED BY: ENGR. V. C. DAVID
CHECKED BY: ENGR. R. A. CAPITILE
RECOMMENDED BY: ENGR. J. A. GILLERA
APPROVED BY: MR. E. A. AGUILAR

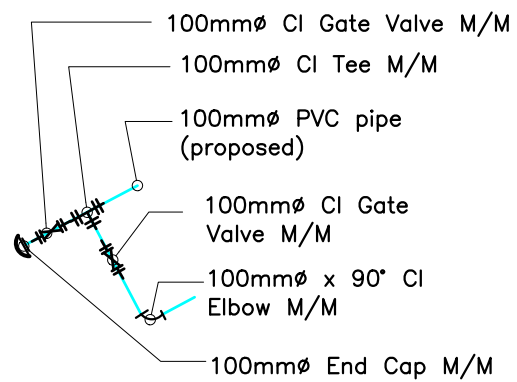
SHEET CONTENTS:	DATE:
DISTRIBUTION LINE LAYOUT PLAN	SHEET NO.
	W2

This design or drawing is the sole property of Calamba Water District. No part of this design or drawing may be reproduced or transmitted in any form or by any means without the written consent of its owner.

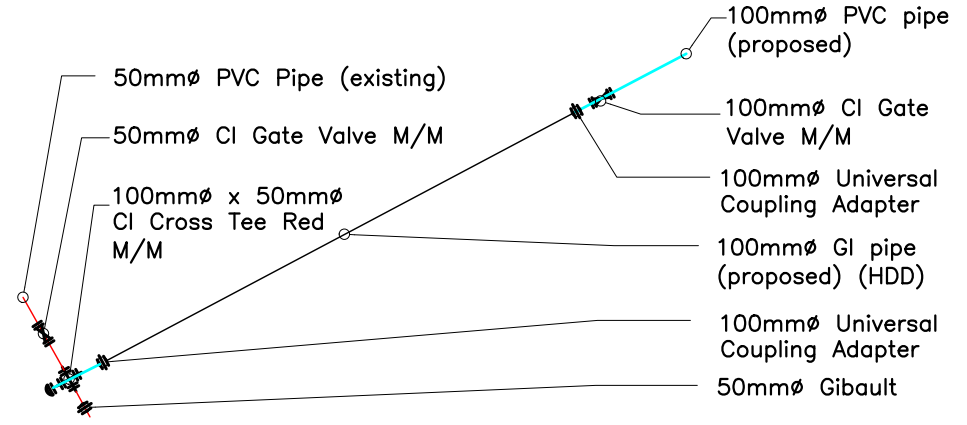
This design or drawing is the sole property of Calamba Water District. No part of this design or drawing may be reproduced or transmitted in any form or by any means without the written consent of its owner.



DETAIL A



DETAIL B



DETAIL C

NOTES:
 1. ALL SIZES AND LOCATIONS ARE SUBJECT TO CHANGE TO SUIT FIELD CONDITIONS.
 2. THE DESIGNER SHALL NOT BE LIABLE FOR ANY ALTERATION/REVISION ON THE PLANS/DRAWINGS AND SPECIFICATIONS IMPROVED BY THE AUTHORIZED SUPERVISING ENGINEER DONE WITHOUT THEIR KNOWLEDGE THAT MAY IMPAIR THE STRENGTH OF THE PROJECT.

CALAMBA WATER DISTRICT
 ENGINEERING DEPARTMENT
 PLANNING AND DESIGN DIVISION

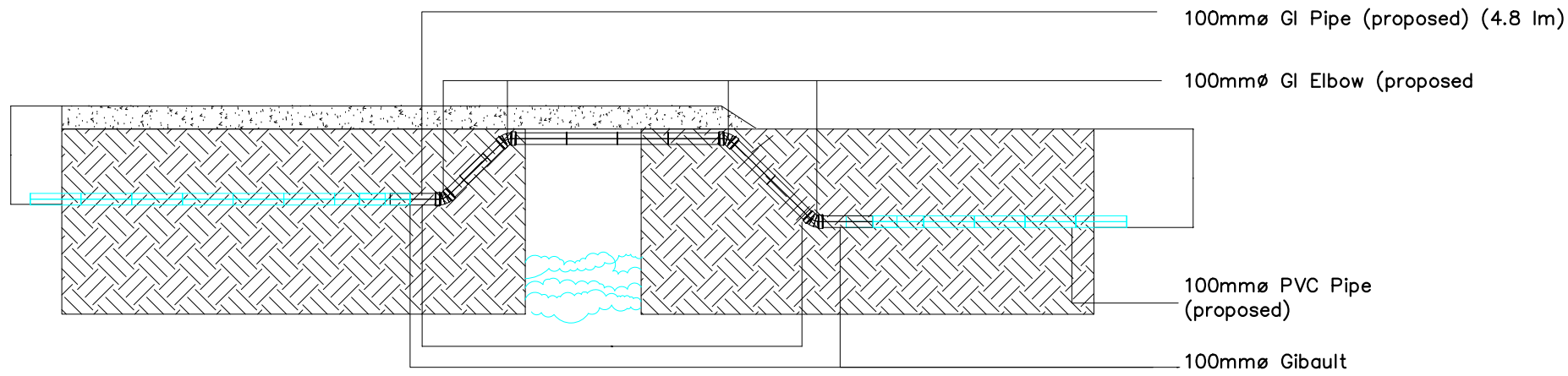
LAKEVIEW SUBD., HALANG, CALAMBA CITY

PROJECT TITLE:	EXPANSION OF WATER LINES
LOCATION:	Masikap St.Brgy. Real, Calamba City, Laguna

AUTOCAD BY: ENGR. V. C. DAVID
DESIGNED BY: ENGR. V. C. DAVID
CHECKED BY: ENGR. R. A. CAPITILE
RECOMMENDED BY: ENGR. J. A. GILLERA
APPROVED BY: MR. E. A. AGUILAR


SHEET CONTENTS:	DATE:
DETAILED PLAN	SHEET NO.
	W3

This design or drawing is the sole property of Calamba Water District. No part of this design or drawing may be reproduced or transmitted in any form or by any means without the written consent of its owner.



DETAIL D

- NOTES:
1. ALL SIZES AND LOCATIONS ARE SUBJECT TO CHANGE TO SUIT FIELD CONDITIONS.
 2. THE DESIGNER SHALL NOT BE LIABLE FOR ANY ALTERATION/REVISION ON THE PLANS/DRAWINGS AND SPECIFICATIONS IMPROVED BY THE AUTHORIZED SUPERVISING ENGINEER DONE WITHOUT THEIR KNOWLEDGE THAT MAY IMPAIR THE STRENGTH OF THE PROJECT.

 <p>CALAMBA WATER DISTRICT ENGINEERING DEPARTMENT PLANNING AND DESIGN DIVISION</p>	PROJECT TITLE:	AUTOCAD BY: ENGR. V. C. DAVID	SHEET CONTENTS:	DATE:
	EXPANSION OF WATER LINES	DESIGNED BY: ENGR. V. C. DAVID	DETAILED PLAN	SHEET NO.
	LOCATION:	CHECKED BY: ENGR. R. A. CAPITILE		W4
	LAKEVIEW SUBD., HALANG, CALAMBA CITY	RECOMMENDED BY: ENGR. J. A. GILLERA		
Masikap St. Brgy. Real, Calamba City, Laguna	APPROVED BY: MR. E. A. AGUILAR			

LEGEND:

- Cluster
- Air release valve
- Blow Off Valve
- Fire Hydrant

MEASUREMENT:

- 53 Clusters to be tapped in 100mmØ PVC pipe



- NOTES:
1. ALL SIZES AND LOCATIONS ARE SUBJECT TO CHANGE TO SUIT FIELD CONDITIONS.
 2. THE DESIGNER SHALL NOT BE LIABLE FOR ANY ALTERATION/REVISION ON THE PLANS/DRAWINGS AND SPECIFICATIONS IMPROVED BY THE AUTHORIZED SUPERVISING ENGINEER DONE WITHOUT THEIR KNOWLEDGE THAT MAY IMPAIR THE STRENGTH OF THE PROJECT.

CALAMBA WATER DISTRICT
 ENGINEERING DEPARTMENT
 PLANNING AND DESIGN DIVISION

24/7 Public Service

LAKEVIEW SUBD., HALANG, CALAMBA CITY

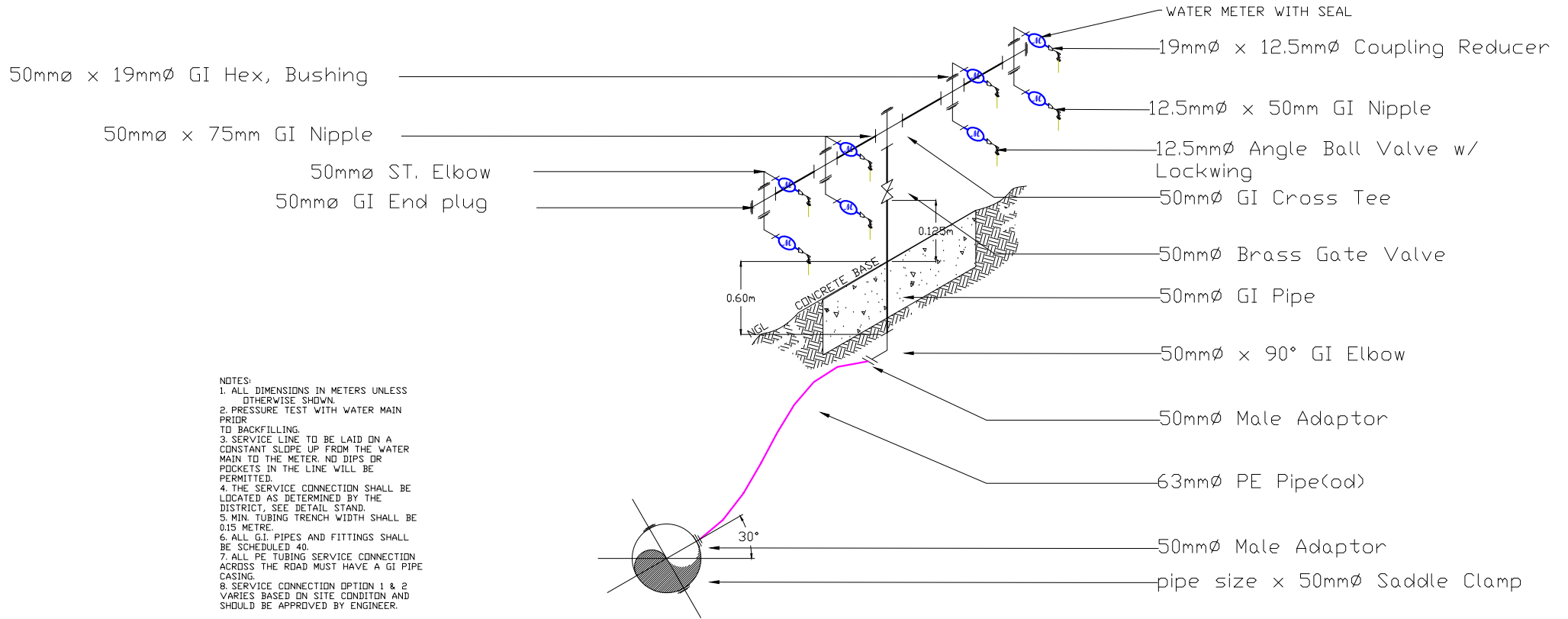
PROJECT TITLE:	EXPANSION OF WATER LINES
LOCATION:	Masikap St.Brgy. Real, Calamba City, Laguna

AUTOCAD BY: ENGR. V. C. DAVID
DESIGNED BY: ENGR. V. C. DAVID
CHECKED BY: ENGR. R. A. CAPITILE
RECOMMENDED BY: ENGR. J. A. GILLERA
APPROVED BY: MR. E. A. AGUILAR

SHEET CONTENTS:	DATE:
CLUSTER LAYOUT PLAN	SHEET NO.
	W5

This design or drawing is the sole property of Calamba Water District. No part of this design or drawing may be reproduced or transmitted in any form or by any means without the written consent of its owner.

SERVICE CONNECTION OPTION 1



- NOTES:
1. ALL DIMENSIONS IN METERS UNLESS OTHERWISE SHOWN.
 2. PRESSURE TEST WITH WATER MAIN PRIOR TO BACKFILLING.
 3. SERVICE LINE TO BE LAID ON A CONSTANT SLOPE UP FROM THE WATER MAIN TO THE METER. NO DIPS OR POCKETS IN THE LINE WILL BE PERMITTED.
 4. THE SERVICE CONNECTION SHALL BE LOCATED AS DETERMINED BY THE DISTRICT, SEE DETAIL STAND.
 5. MIN. TUBING TRENCH WIDTH SHALL BE 0.15 METRE.
 6. ALL GI PIPES AND FITTINGS SHALL BE SCHEDULED 40.
 7. ALL PE TUBING SERVICE CONNECTION ACROSS THE ROAD MUST HAVE A GI PIPE CASING.
 8. SERVICE CONNECTION OPTION 1 & 2 VARIES BASED ON SITE CONDITION AND SHOULD BE APPROVED BY ENGINEER.

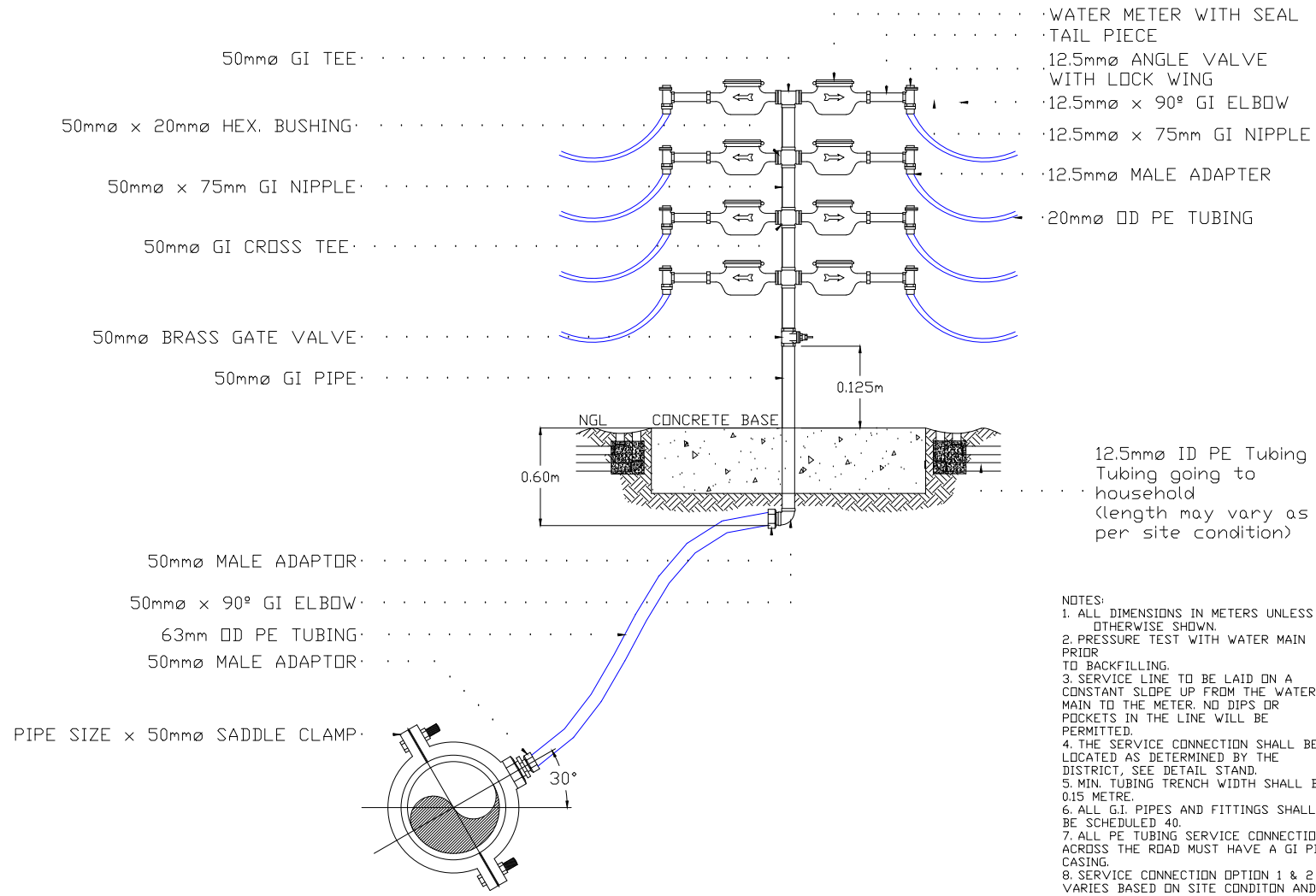


CALAMBA WATER DISTRICT
ENGINEERING DEPARTMENT
PLANNING AND DESIGN DIVISION

PROJECT TITLE:	AUTOCAD BY: ENGR. V. C. DAVID	SHEET CONTENTS:	DATE:
EXPANSION OF WATER LINES	DESIGNED BY: ENGR. V. C. DAVID	CLUSTER ASSEMBLY OPTION 1	SHEET NO.
	CHECKED BY: ENGR. R. A. CAPITILE		
LOCATION:	RECOMMENDED BY: ENGR. J. A. GILLERA	W6	
LAKEVIEW SUBD., HALANG, CALAMBA CITY	APPROVED BY: MR. E. A. AGUILAR		
Masikap St.Brgy. Real, Calamba City, Laguna			

This design or drawing is the sole property of Calamba Water District. No part of this design or drawing may be reproduced or transmitted in any form or by any means without the written consent of its owner.

SERVICE CONNECTION OPTION 2



- NOTES:
1. ALL DIMENSIONS IN METERS UNLESS OTHERWISE SHOWN.
 2. PRESSURE TEST WITH WATER MAIN PRIOR TO BACKFILLING.
 3. SERVICE LINE TO BE LAID ON A CONSTANT SLOPE UP FROM THE WATER MAIN TO THE METER. NO DIPS OR POCKETS IN THE LINE WILL BE PERMITTED.
 4. THE SERVICE CONNECTION SHALL BE LOCATED AS DETERMINED BY THE DISTRICT, SEE DETAIL STAND.
 5. MIN. TUBING TRENCH WIDTH SHALL BE 0.15 METRE.
 6. ALL GI. PIPES AND FITTINGS SHALL BE SCHEDULED 40.
 7. ALL PE TUBING SERVICE CONNECTION ACROSS THE ROAD MUST HAVE A GI PIPE CASING.
 8. SERVICE CONNECTION OPTION 1 & 2 VARIES BASED ON SITE CONDITON AND SHOULD BE APPROVED BY ENGINEER.



CALAMBA WATER DISTRICT
ENGINEERING DEPARTMENT
PLANNING AND DESIGN DIVISION

LAKEVIEW SUBD., HALANG, CALAMBA CITY

PROJECT TITLE:
EXPANSION OF WATER LINES

LOCATION:
Masikap St.Brgy. Real, Calamba City, Laguna

AUTOCAD BY: ENGR. V. C. DAVID
DESIGNED BY: ENGR. V. C. DAVID
CHECKED BY: ENGR. R. A. CAPITILE
RECOMMENDED BY: ENGR. J. A. GILLERA
APPROVED BY: MR. E. A. AGUILAR

SHEET CONTENTS:
CLUSTER
ASSEMBLY
OPTION 2

DATE:
SHEET NO.
W7

This design or drawing is the sole property of Calamba Water District. No part of this design or drawing may be reproduced or transmitted in any form or by any means without the written consent of its owner.